

20 REASONS FOR

GREENZONE
PLANTATION SHUTTERS

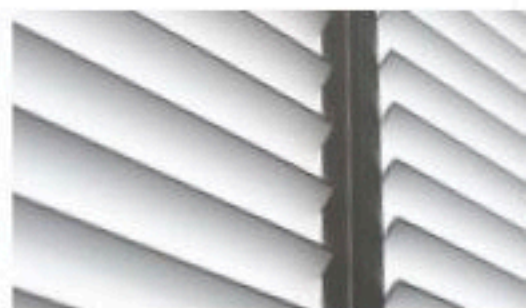


INTERNAL / EXTERNAL WINDOW SHUTTERS

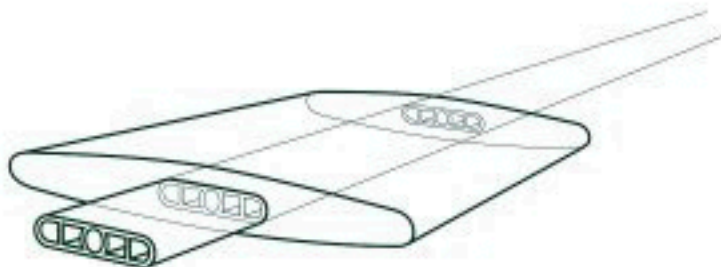
- 1 Engineered and manufactured to exacting specifications for the best Greenzone Plantation shutter performance.
- 2 More moisture and humidity resistant than any timber Greenzone Plantation shutter material.
- 3 Will not crack, chip, split or warp as a shutter under harsh Australian conditions.
- 4 Better than timber for fixing and fastening characteristics.
- 5 Constructed with high strength joints using both stainless steel screws and adhesive.
- 6 Extrusion material is a carbon/ glass fibre reinforced polymer.
- 7 Recyclable.
- 8 Manufactured from hypoallergenic materials.
- 9 Does not support bacterial activity.
- 10 Termite-resistant.
- 11 Insulates better than the equivalent timber Greenzone Plantation shutter.
- 12 Does not support fire combustion.
- 13 Will not sag, creep or deform over time.
- 14 Contains an aluminium insert for higher strength and increased stiffness.
- 15 Finished in Valspar paints
- 16 Surface is repairable and re-coat able.
- 17 Easily cleaned without harsh chemicals.
- 18 UV-resistant.
- 19 Clever sections and detailing helps conceal substrate imperfections in Greenzone Plantation shutters.
- 20 Outperforms all other Greenzone Plantation shutters known and warranted to look as good as new in 20 years.

GREENZONE SHUTTERS ARE SLIM, ELEGANT, CLEAN, SMOOTH AND REFINED PROVIDES THE RICH LOOK OF TIMBER SHUTTERS WITHOUT TIMBERS INHERENT PROBLEMS

PERFORM BETTER
LASTS LONGER THAN TRADITIONAL TIMBER SHUTTERS
INSULATES 70% MORE EFFICIENTLY



| | |
|------------|----------------------------------|
| Colours | white, bright white and pearl |
| Blades | elliptical 64mm, 89mm, 115mm |
| Style Type | 51mm beaded |
| Tilt Road | clear view / centre / offset |
| Shapes | oval, sunburst, triangular |
| Frames | L-frames, Z-frame square, T post |



ALUMINIUM INSERT
FOR HIGHER STRENGTH AND INCREASED STIFFNESS